

Lot 12 Mangrove Restoration Progress Report, March 2010**Sept. 2, 2010 Report****OGC Case No.: 08-1930****8/24/10**

Name Jack Rienks
 Address 1921 Neptune Dr., Englewood, FL 34223

Photograph	Position Taken From	Required Information
Position AA: Approaching Area B from the street:	Midway on a line from the large carrotwood tree at the wood fence and the utility pole 48 ft. out from the fence.	Photo AA attached: Area B approaching from street.
Position BB: Close view of Area B approaching from street:	16 ft. out from the fence gate jam. This is 14 ft. toward the street from the first Australian pine stump at the fence.	Photo BB attached: Area B close view.
Position CC: View of mangrove damage area looking east at waterline:	At the low tide water line next to the south most Australian pine in Area B.	Photo CC attached: Area A damage from the west.
Position DD: View of mangrove damage area looking west at waterline:	At the low tide water line just below the oak tree at the east end of Area A.	Photo DD attached: Area A damage from the east.

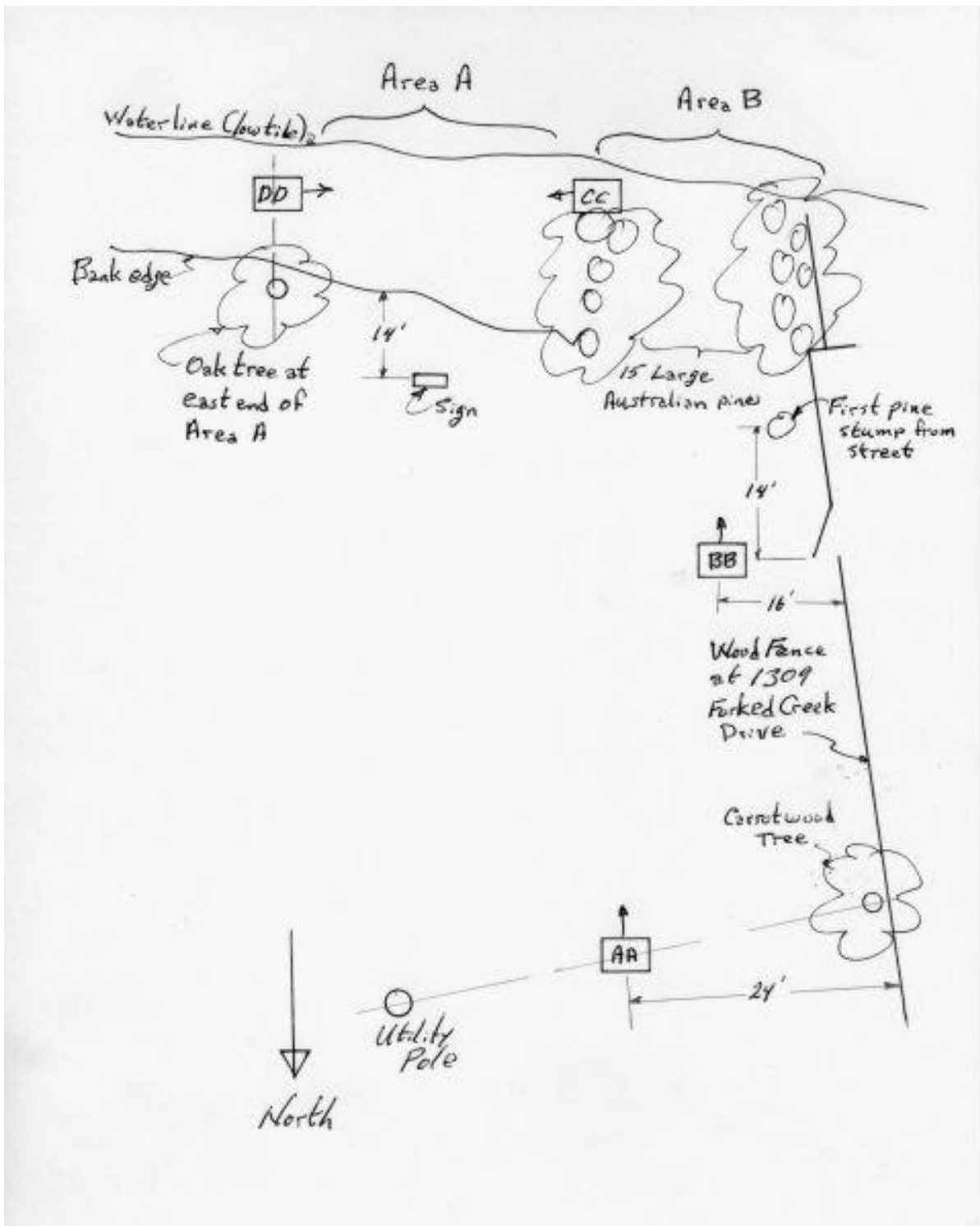
The height of the damaged mangroves ranges from about 3-21 inches. The percentage of cover is estimated to be less than 1 %. Restoration has suffered a setback as a result of the frost damage resulting from the freezing temperatures three nights in a row in mid January.

Exotic Vegetation Removal

Area A: All of the small Australian Pines were removed earlier using hand tools and existing shoots and seedlings were sprayed with a systemic brush killer. Pepper trees had been removed earlier and their stumps killed.

Area B: The large Australian pines were also removed earlier using trucks, rigging lines, chippers, power tools, and hand tools. The stumps have been drilled and stump killer inserted in the holes. We continue to spray shoots and seedlings with a systemic brush killer.

Lot 12 Mangrove Restoration Progress Report, March 2010



Sketch of Areas A and B showing the positions photos were taken from and the dimensions to the reference points. Positions AA and BB were used to show the large Australian pines as Area B is approached from the street. Positions CC and DD were taken at the low tide water line to show the details of the damaged mangroves.

Lot 12 Mangrove Restoration Progress Report, March 2010



This was taken at a location half way between the carrotwood tree adjacent to the wood fence at 1309 Forked Creek Drive and the utility post 48 ft. out from the fence (location AA on the sketch). It shows the street view of the area where 15 large Australian pines had dominated Area B before being removed. Fruit from the nearby papaya trees had apparently been left in the area resulting in several new trees where the Australian pine once stood.

Lot 12 Mangrove Restoration Progress Report, March 2010



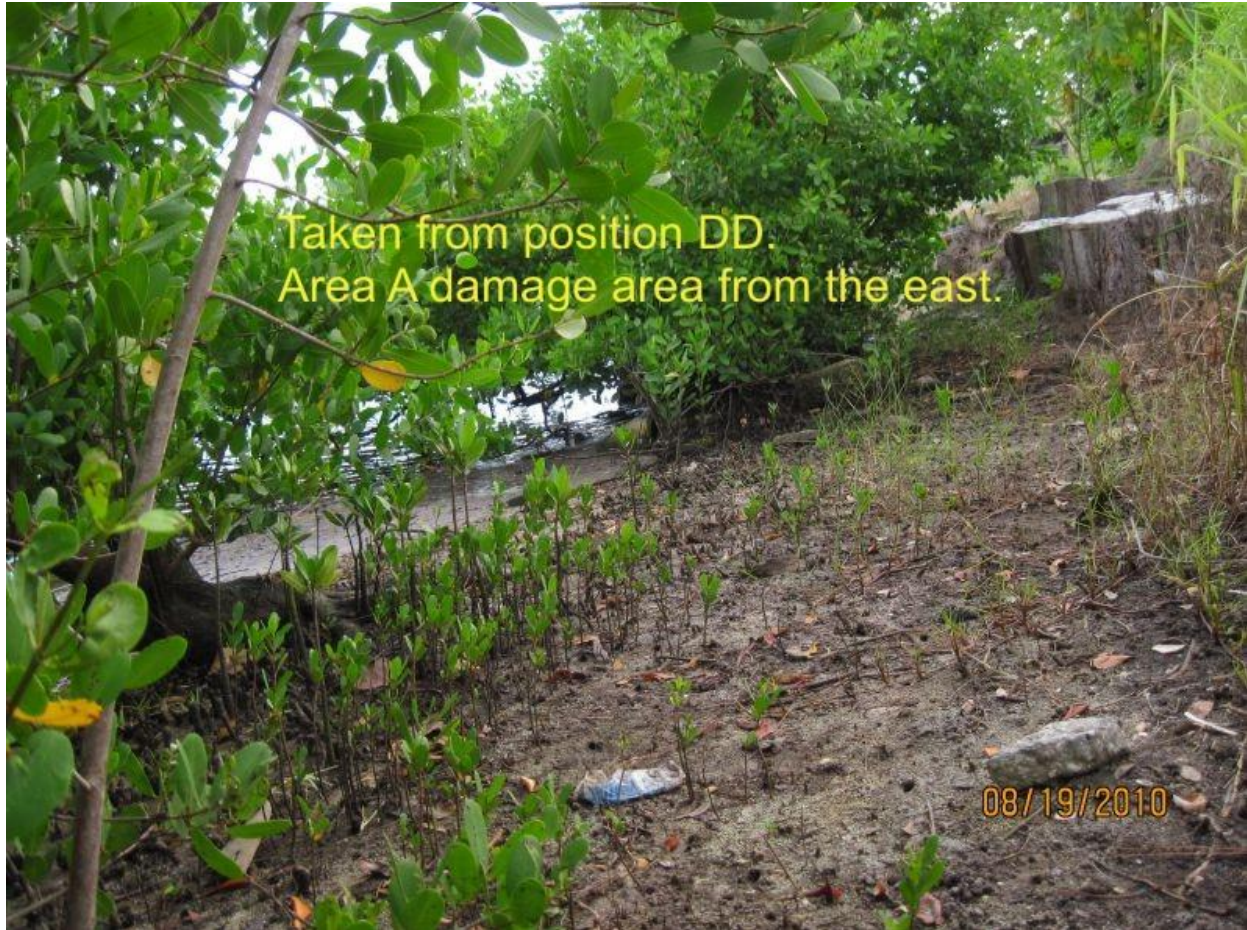
This was taken closer to the area where the large Australian pines have been removed. It was taken at position BB on the sketch, 16 ft. out from the gate jam post on the wood fence on the adjacent property.

Lot 12 Mangrove Restoration Progress Report, March 2010



This was taken at position CC, standing just above the low tide water line, leaning against the south most Australian pine stump at the west end of Area B. It shows the damage area in Area A.

Lot 12 Mangrove Restoration Progress Report, March 2010



Same area of damaged mangroves as the previous photo but taken from the west at a position just below the oak tree on the bank at the east end of Area A, position DD on the sketch.